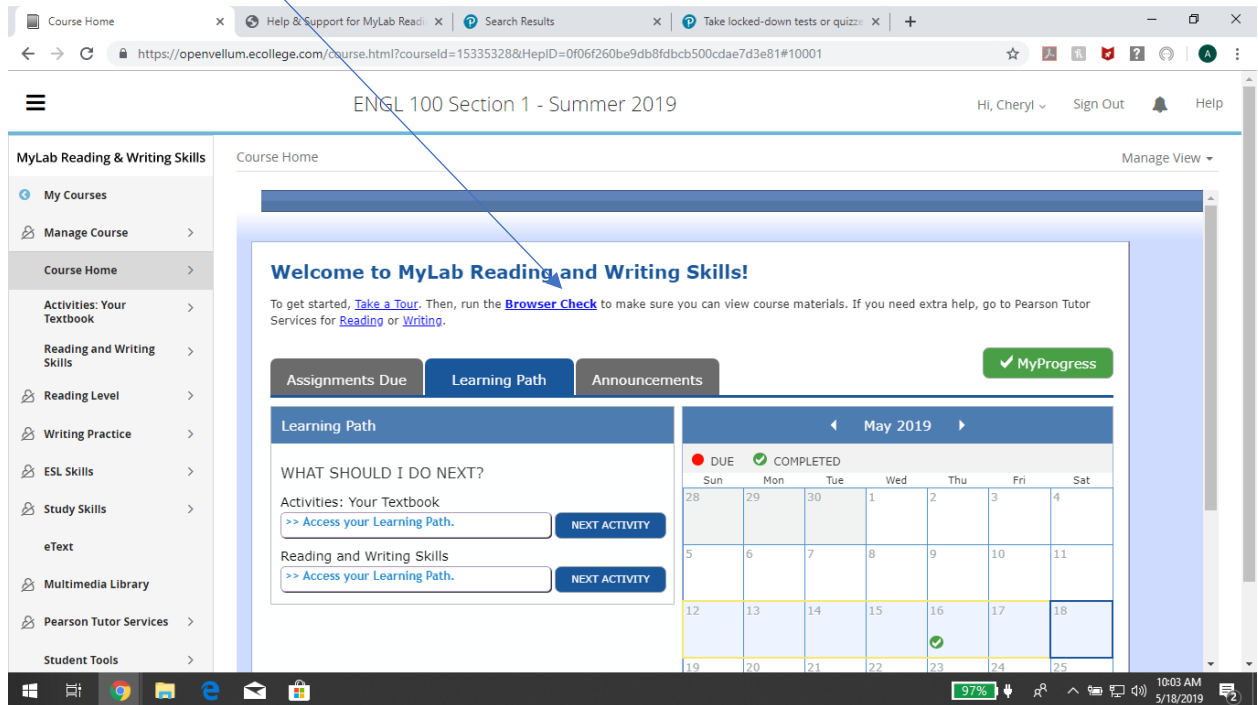
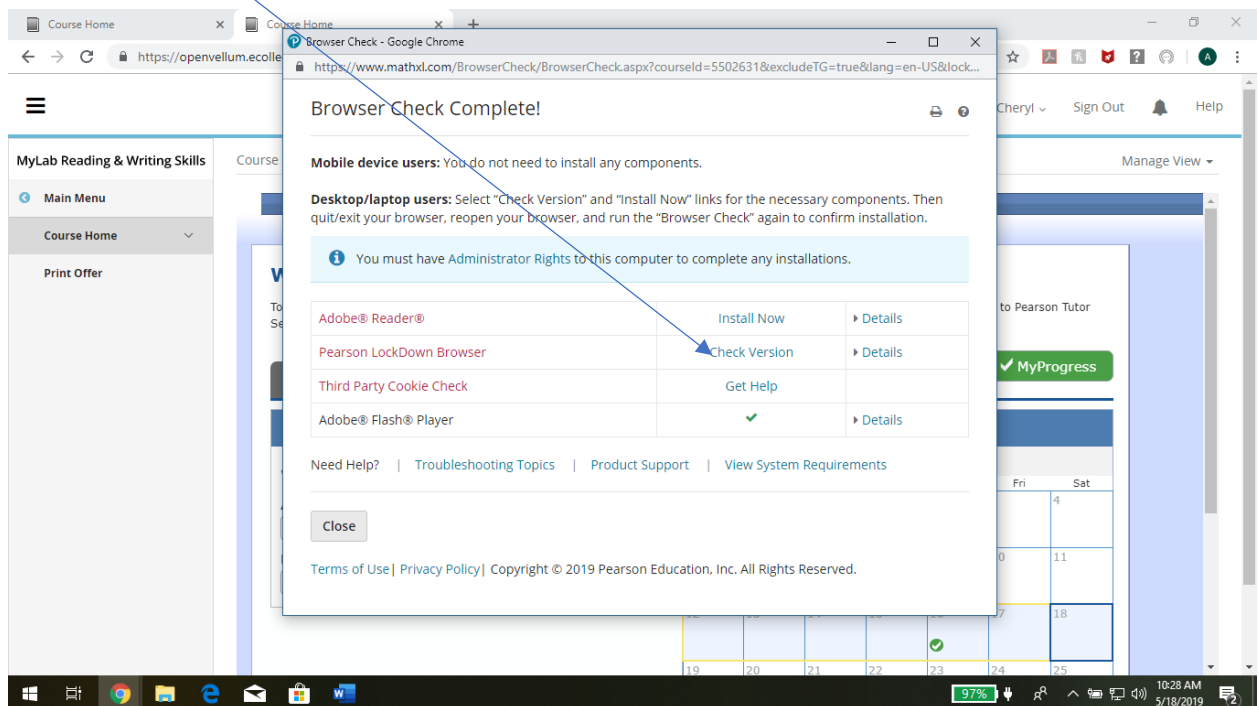


Installing the Pearson LockDown Browser

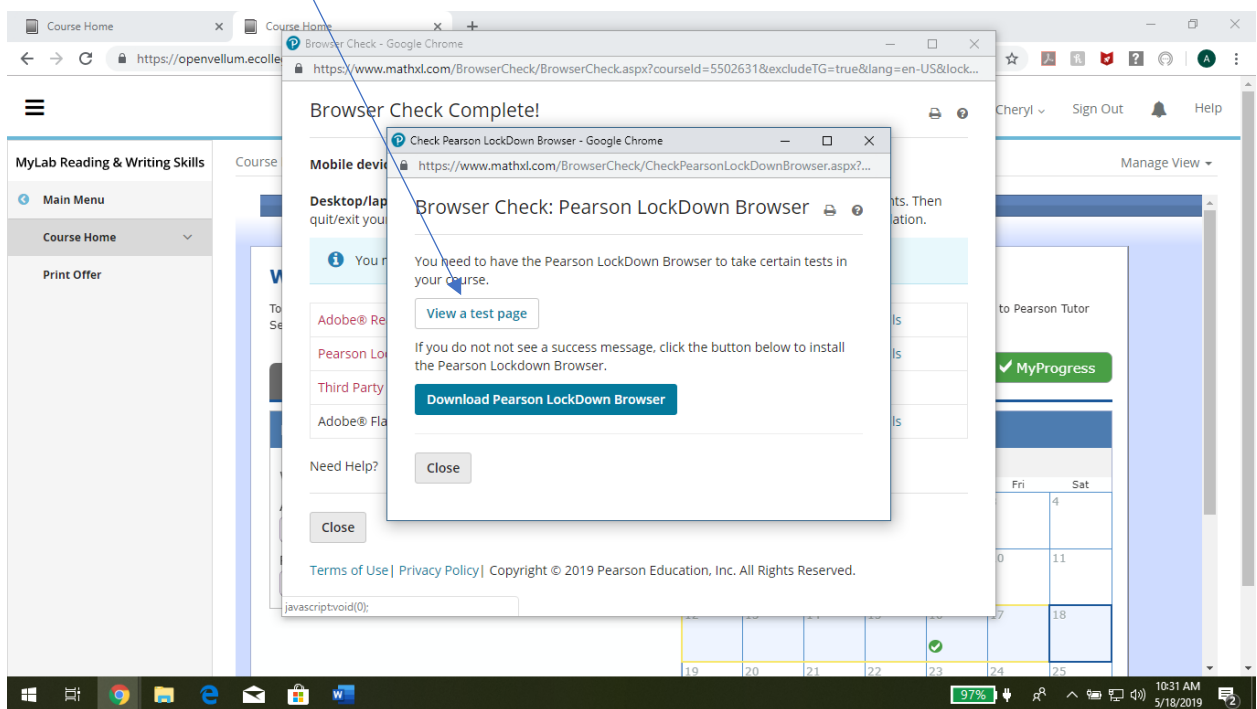
1. Be sure that pop ups are not blocked.
2. Click on Browser Check



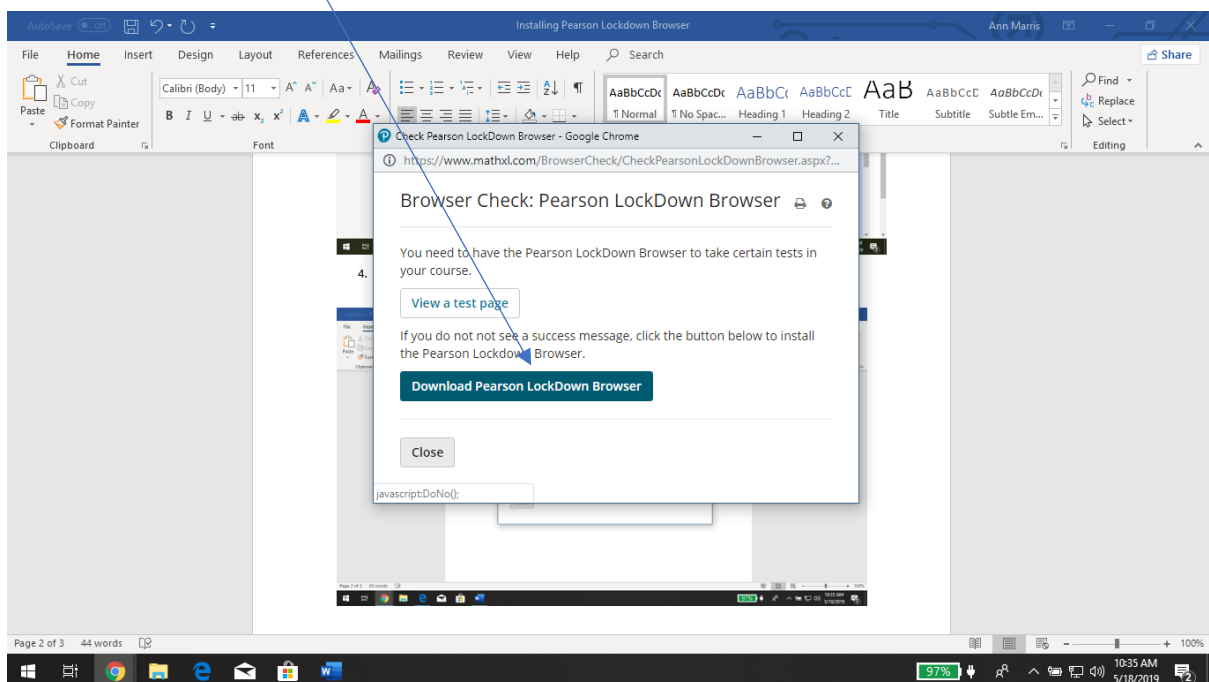
3. Click on 'Check Version' on 'Pearson Lockdown Browser'.



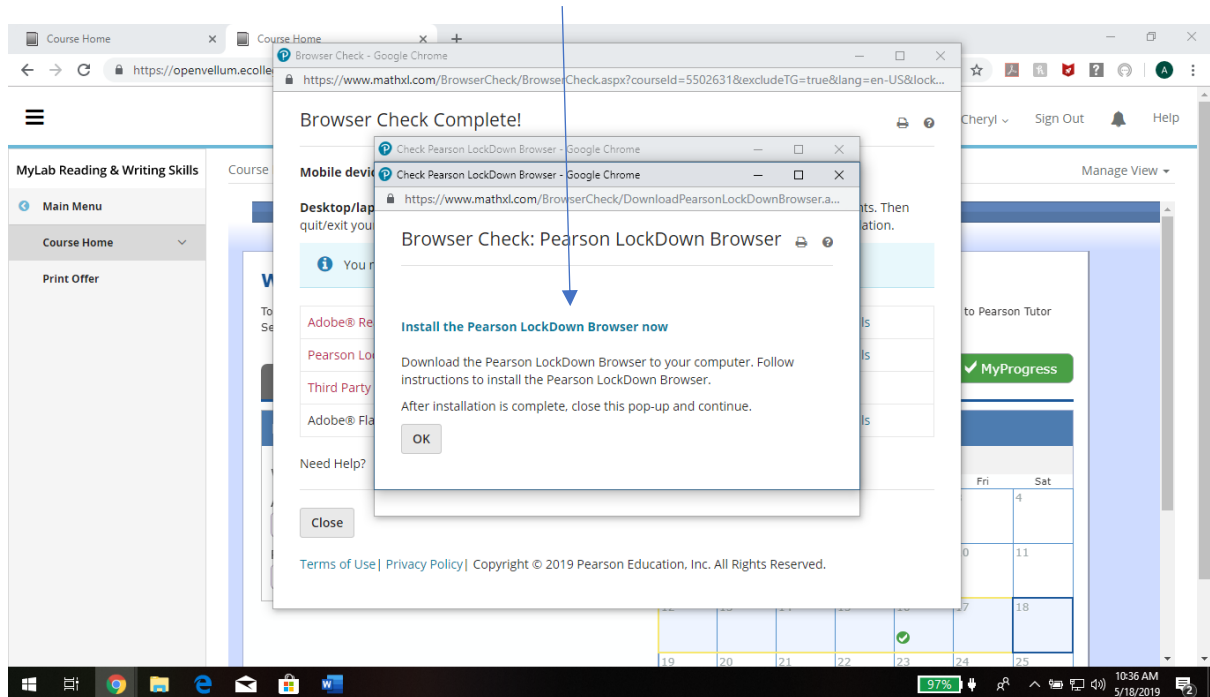
4. Click on 'View a test page'.



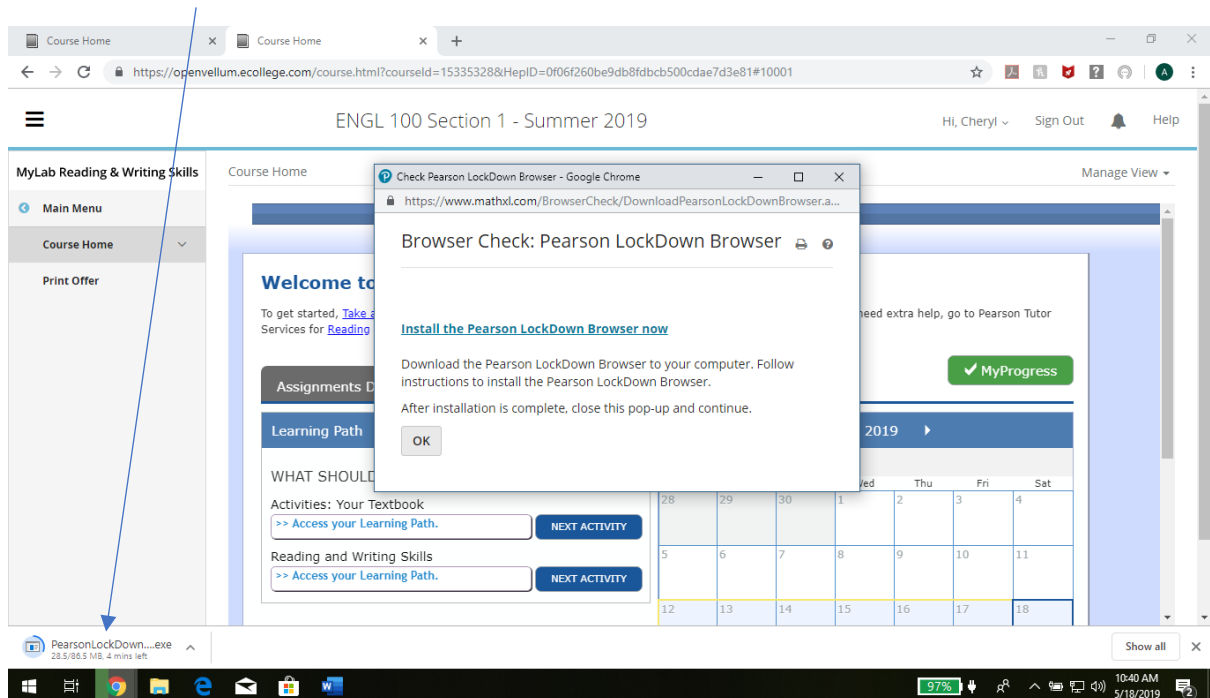
5. If you do not see a success message, click the button below to install the Pearson LockDown Browser.



6. Click on 'Install the Pearson LockDown Browser now'.



7. The execute file will start downloading at the bottom of your screen.



8. Once the execute file has downloaded, click on it to open it. Follow the directions.

9. After the installation has completed, go back to the home page and click on 'Browser Check'.

The screenshot shows the MyLab Reading and Writing Skills course home page for ENGL 100 Section 1 - Summer 2019. The page features a sidebar with navigation links and a main content area with a welcome message and a calendar. A blue arrow points from the 'Browser Check' link in the welcome message to the 'Browser Check' link in the sidebar.

Course Home

ENGL 100 Section 1 - Summer 2019

Hi, Cheryl - Sign Out Help

MyLab Reading & Writing Skills

My Courses

Manage Course

Course Home

Activities: Your Textbook

Reading and Writing Skills

Reading Level

Writing Practice

ESL Skills

Study Skills

eText

Multimedia Library

Pearson Tutor Services

Student Tools

Welcome to MyLab Reading and Writing Skills!

To get started, [Take a Tour](#). Then, run the [Browser Check](#) to make sure you can view course materials. If you need extra help, go to Pearson Tutor Services for [Reading](#) or [Writing](#).

Assignments Due Learning Path Announcements

MyProgress

Learning Path

WHAT SHOULD I DO NEXT?

Activities: Your Textbook

>> Access your Learning Path. NEXT ACTIVITY

Reading and Writing Skills

>> Access your Learning Path. NEXT ACTIVITY

May 2019

Sun	Mon	Tue	Wed	Thu	Fri	Sat
28	29	30	1	2	3	4
5	6	7	8	9	10	11
12	13	14	15	16	17	18
19	20	21	22	23	24	25

10. Next, click on 'Check Version'.

The screenshot shows the 'Browser Check Complete' dialog box. It provides instructions for mobile and desktop users and lists the status of various components. A blue arrow points from the 'Check Version' link in the dialog box to the 'Check Version' link in the sidebar of the previous screenshot.

Browser Check - Google Chrome

Installing Pearson Lockdown Browser - Saved to this PC

https://www.mathxd.com/BrowserCheck/BrowserCheck.aspx?courseid=5502631&excludeTG=true&lang=en-US&lock...

Browser Check Complete!

Mobile device users: You do not need to install any components.

Desktop/laptop users: Select "Check Version" and "Install Now" links for the necessary components. Then quit/exit your browser, reopen your browser, and run the "Browser Check" again to confirm installation.

You must have Administrator Rights to this computer to complete any installations.

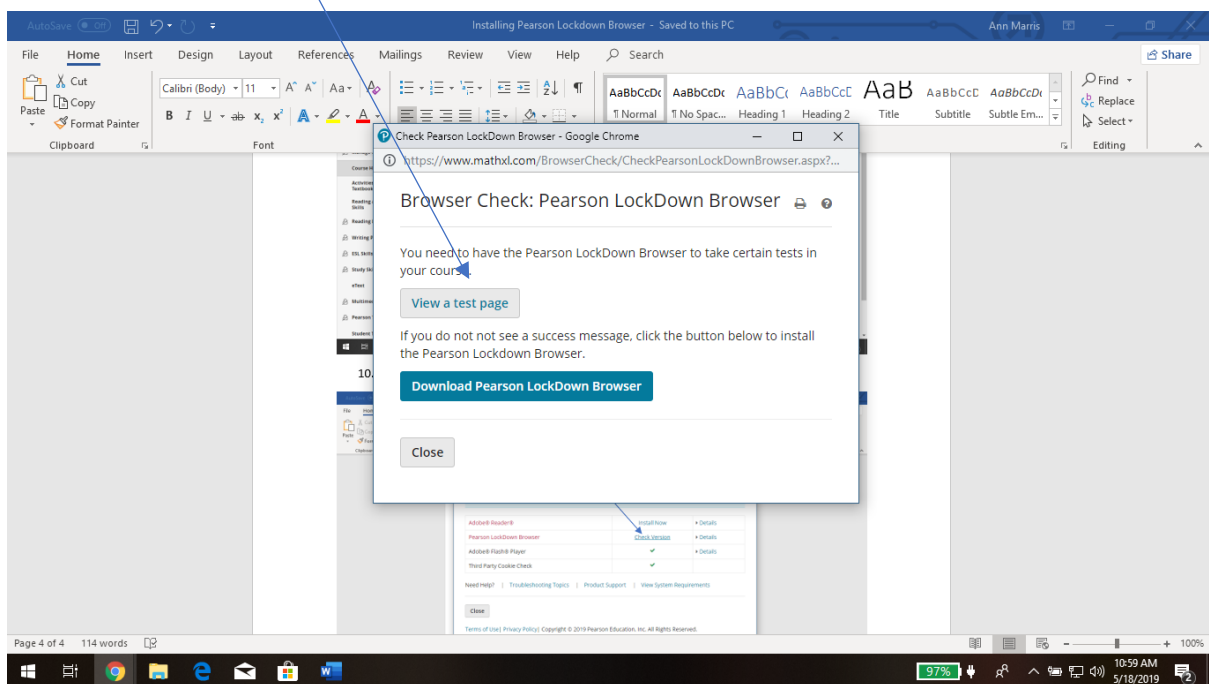
Component	Status	Action
Adobe® Reader®		Install Now Details
Pearson LockDown Browser		Check Version Details
Adobe® Flash® Player	✓	Details
Third Party Cookie Check	✓	

Need Help? Troubleshooting Topics Product Support View System Requirements

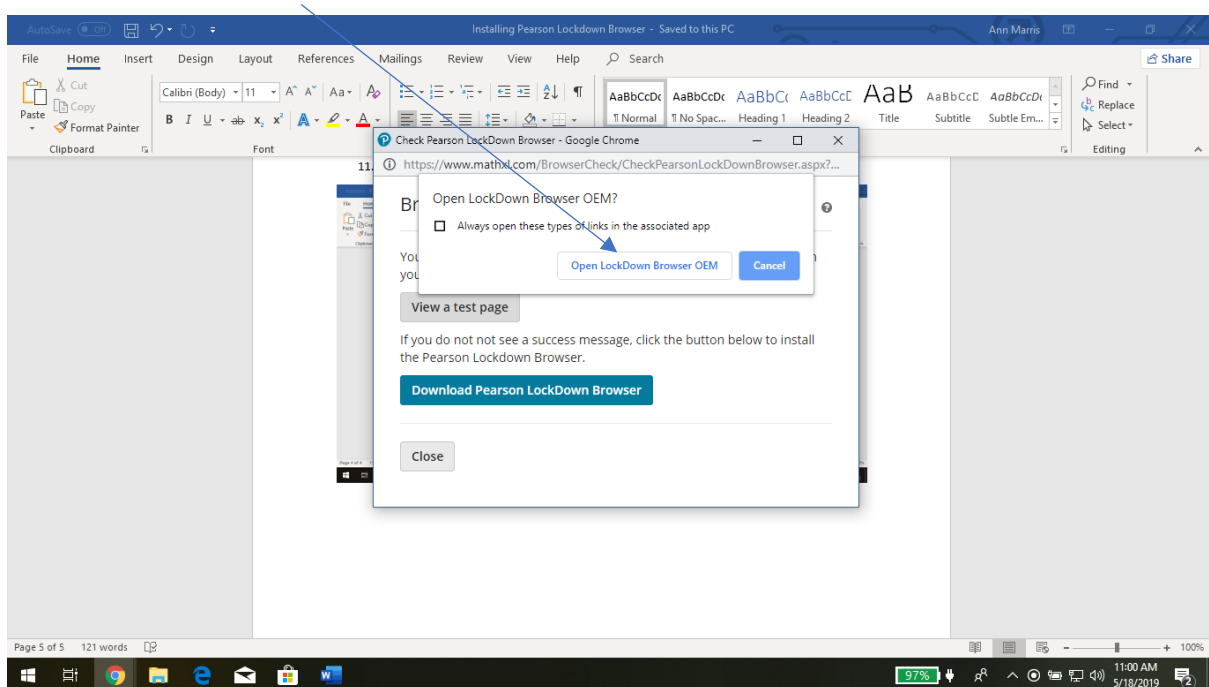
Close

Terms of Use Privacy Policy Copyright © 2019 Pearson Education, Inc. All Rights Reserved.

11. Click on 'View a test page'.



12. Click on "Open LockDown Browser OEM".



13. You should be taken to a page that says the LockDown Browser has been successfully installed.